

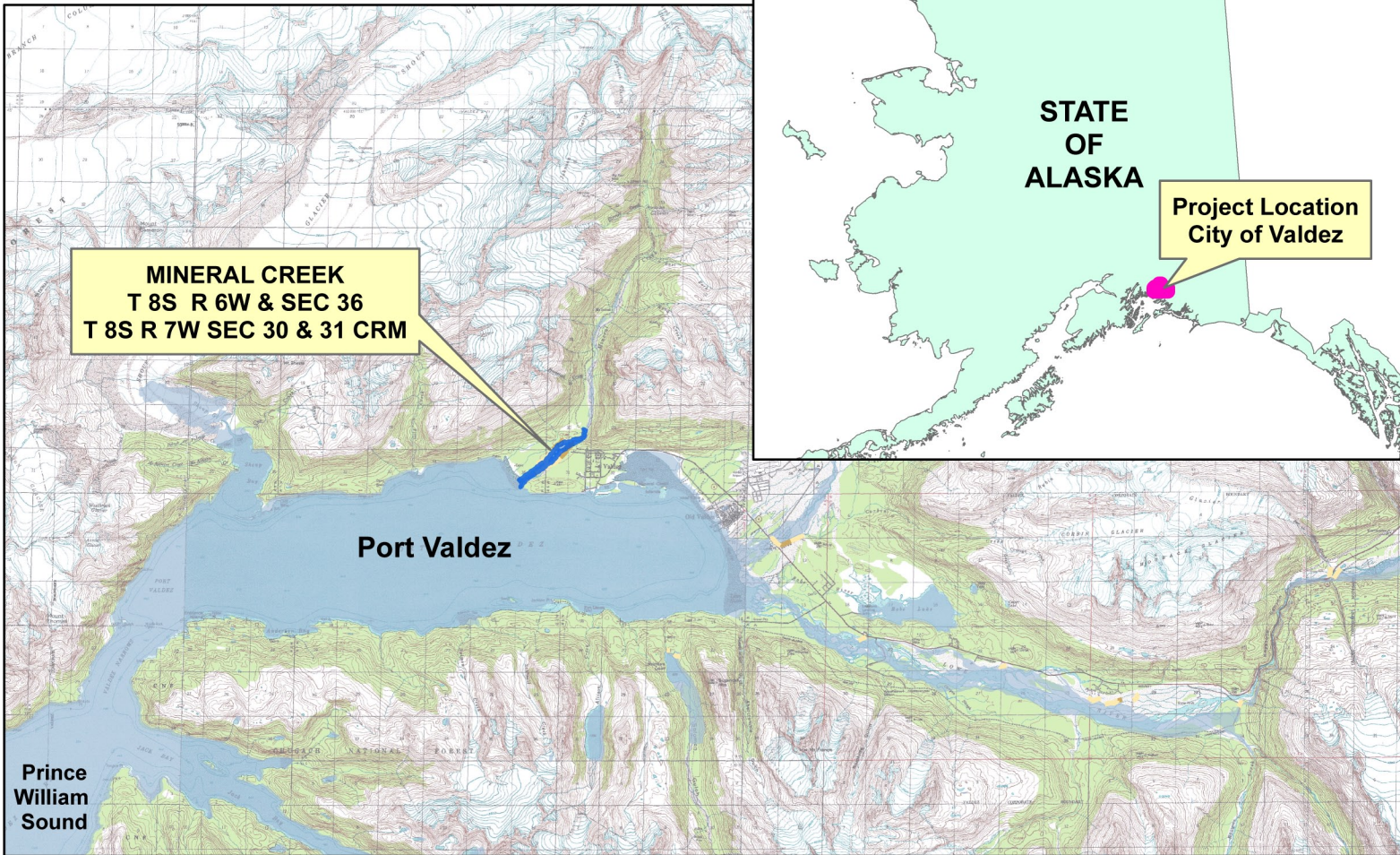


Project Overview



STATE OF ALASKA

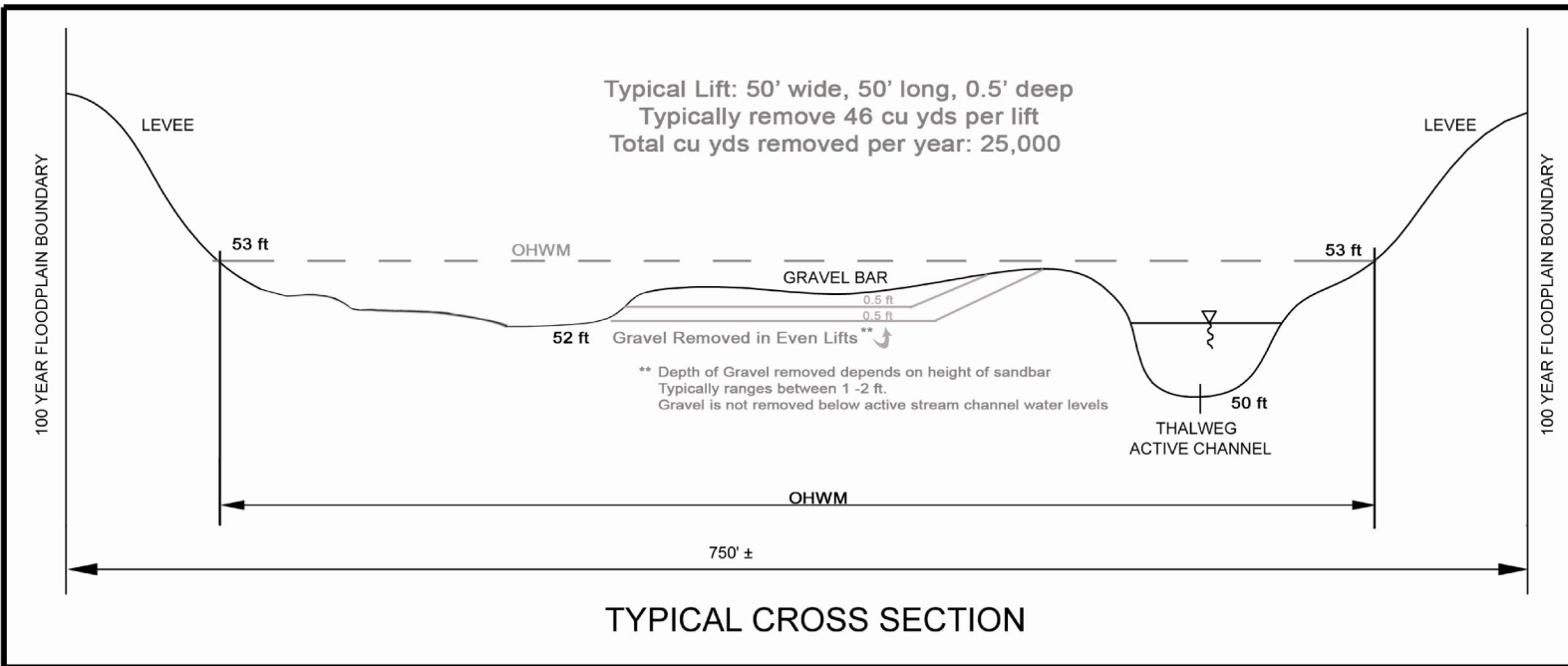
Project Location
City of Valdez



MINERAL CREEK
T 8S R 6W & SEC 36
T 8S R 7W SEC 30 & 31 CRM

Port Valdez

Prince William Sound



Typical Lift: 50' wide, 50' long, 0.5' deep
Typically remove 46 cu yds per lift
Total cu yds removed per year: 25,000

TYPICAL CROSS SECTION

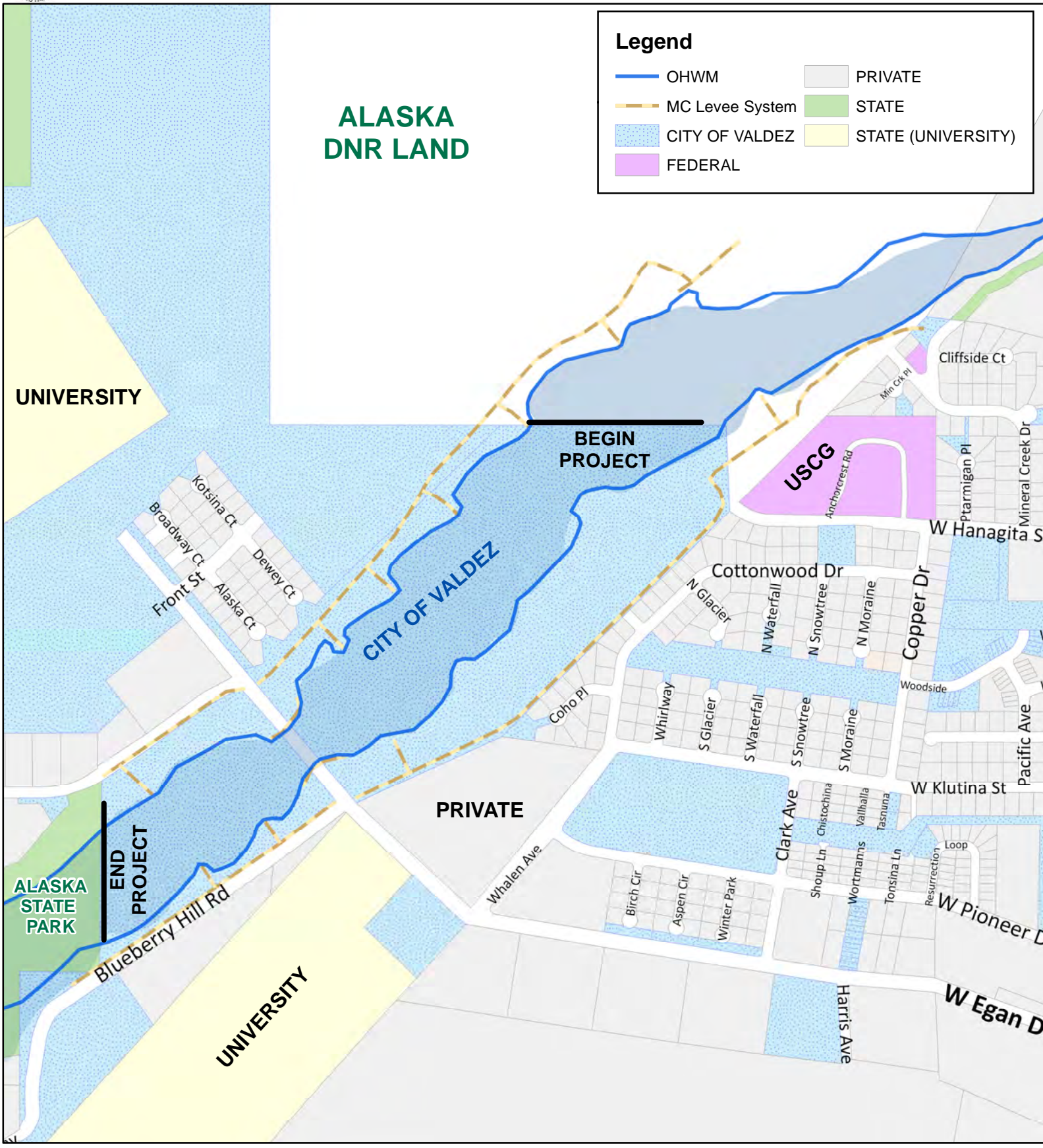
COE FILE P-1991-0030
MINERAL CREEK 2
CITY OF VALDEZ
AERIAL IMAGERY 07/2009
SHEET 1 of 6

Mineral Creek Gravel Extraction
Valdez, Alaska

City of Valdez
POA-1991-30-M5
Mineral Creek
March 30, 2013
Sheet 1 of 6

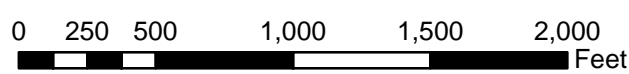


Land Ownership



COE FILE P-1991-0030
 MINERAL CREEK 2
 CITY OF VALDEZ
 SHEET 2 of 6

Mineral Creek Gravel Extraction Valdez, Alaska



City of Valdez
 POA-1991-30-M5
 Mineral Creek
 March 30, 2013
 Sheet 2 of 6



Project Boundary Maintenance of Entire Levee System



Legend

- Project Boundary
- OHWM
- MC Levee System

COE FILE P-1991-0030
 MINERAL CREEK 2
 CITY OF VALDEZ
 AERIAL IMAGERY 07/2009
 SHEET 3 of 6

**Mineral Creek Gravel Extraction
 Valdez, Alaska**

0 250 500 1,000 1,500 2,000 Feet

City of Valdez
 POA-1991-30-M5
 Mineral Creek
 March 30, 2013
 Sheet 3 of 6



Excavation Boundary Upstream and Downstream



COE FILE P-1991-0030
 MINERAL CREEK 2
 CITY OF VALDEZ
 AERIAL IMAGERY 07/2009
 SHEET 4 of 6

**Mineral Creek Gravel Extraction
 Valdez, Alaska**

0 250 500 1,000 1,500 2,000 Feet

City of Valdez
 POA-1991-30-M5
 Mineral Creek
 March 30, 2013
 Sheet 4 of 6



Stockpile Areas



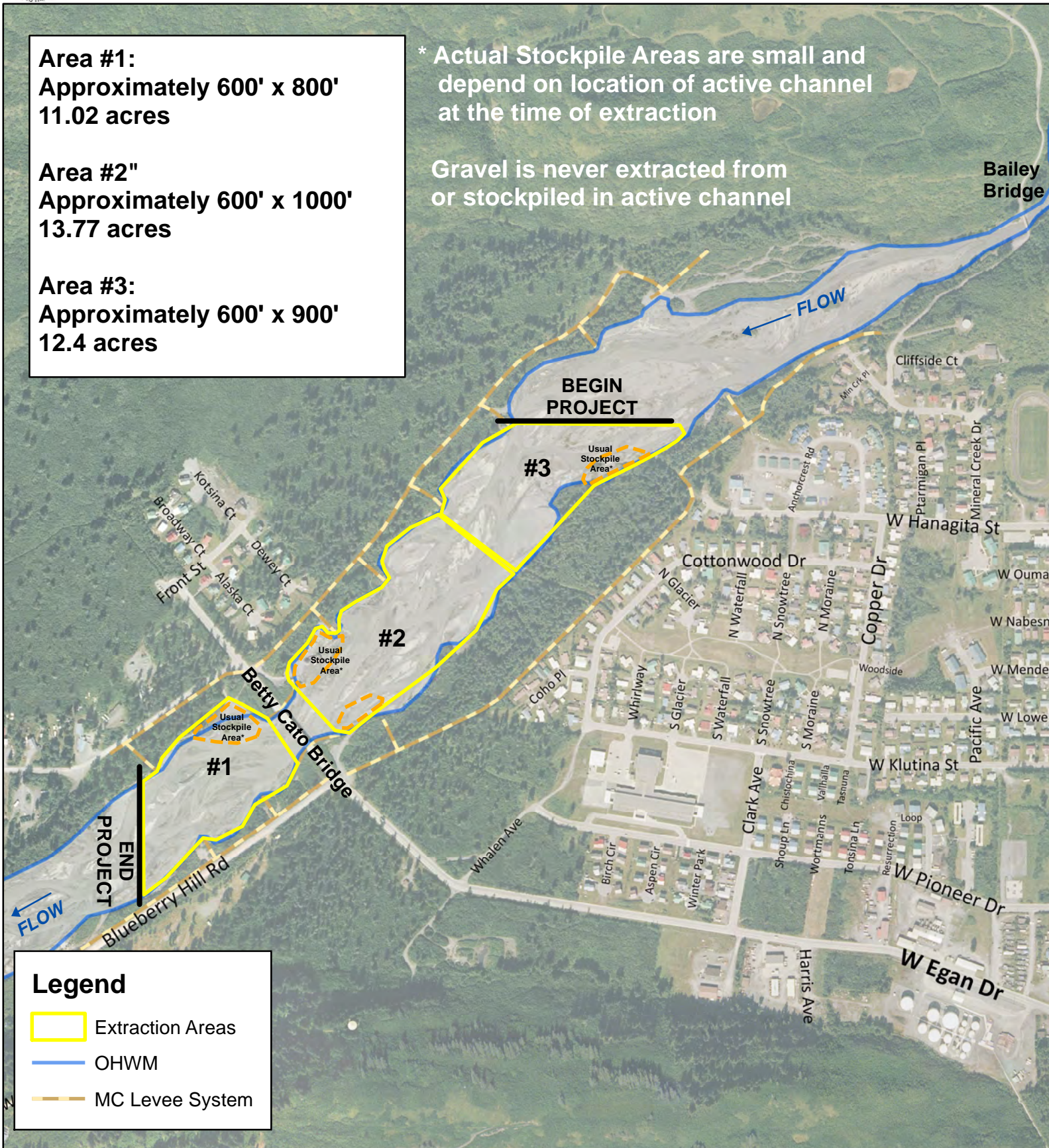
Area #1:
 Approximately 600' x 800'
 11.02 acres

Area #2"
 Approximately 600' x 1000'
 13.77 acres

Area #3:
 Approximately 600' x 900'
 12.4 acres

* Actual Stockpile Areas are small and depend on location of active channel at the time of extraction

Gravel is never extracted from or stockpiled in active channel



Legend

- Extraction Areas
- OHWM
- MC Levee System

COE FILE P-1991-0030
 MINERAL CREEK 2
 CITY OF VALDEZ
 AERIAL IMAGERY 07/2009
 SHEET 5 of 6

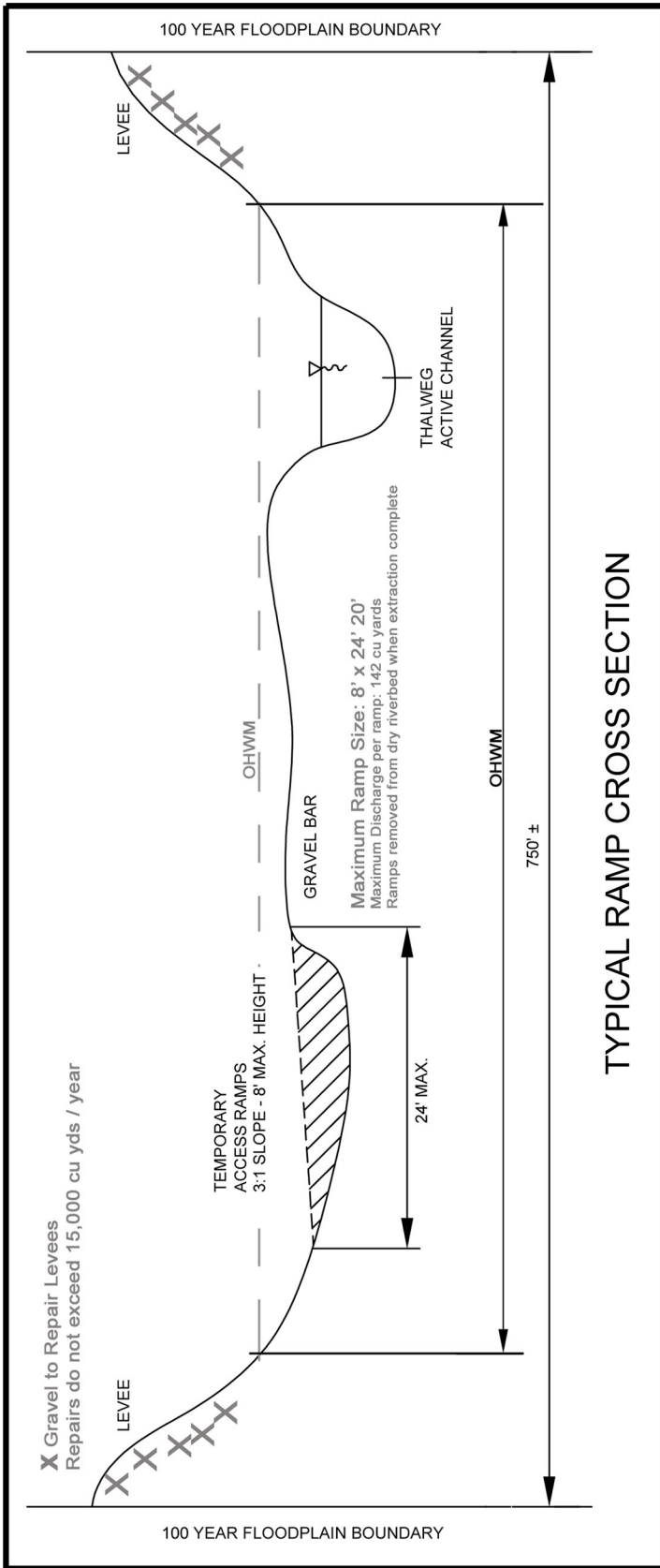
**Mineral Creek Gravel Extraction
 Valdez, Alaska**

0 250 500 1,000 1,500 2,000
 Feet

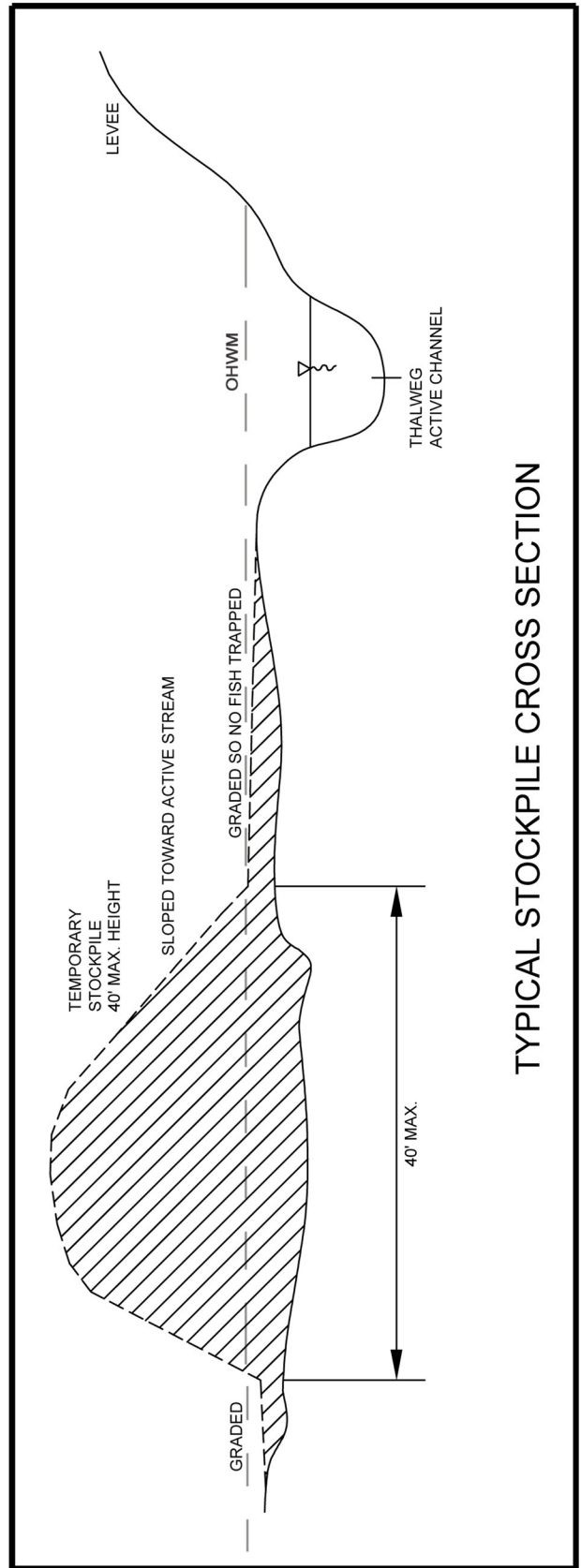
City of Valdez
 POA-1991-30-M5
 Mineral Creek
 March 30, 2013
 Sheet 5 of 6



Cross-Sections



TYPICAL RAMP CROSS SECTION



TYPICAL STOCKPILE CROSS SECTION

COE FILE P-1991-0030
MINERAL CREEK 2
CITY OF VALDEZ
SHEET 6 of 6

Mineral Creek Gravel Extraction
Valdez, Alaska

City of Valdez
POA-1991-30-M5
Mineral Creek
March 30, 2013
Sheet 6 of 6